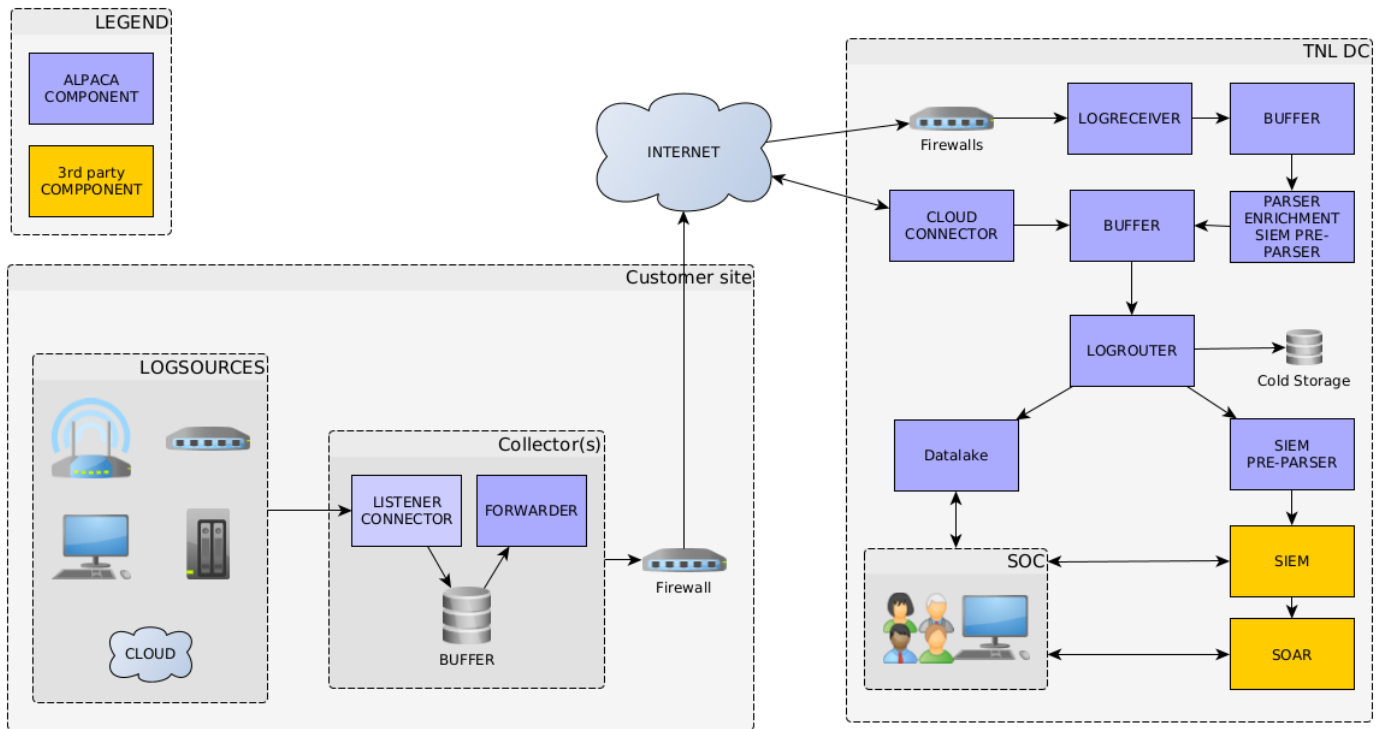


# Basic pipeline architecture



During each (critical) step data will be written to storage (which will be HA/redundant) to ensure no data will be lost when a critical failure occurs.

The amount of data in memory will be limited as much as possible

Revision #3

Created 2026-02-02 11:48:40 UTC by Admin

Updated 2026-02-02 11:50:02 UTC by Admin